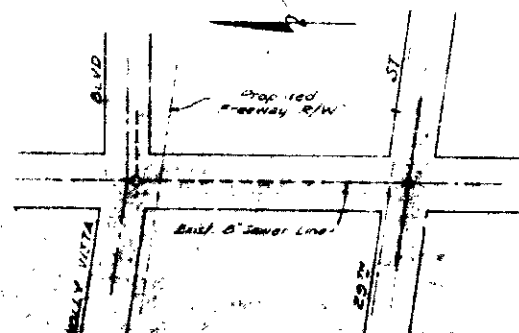
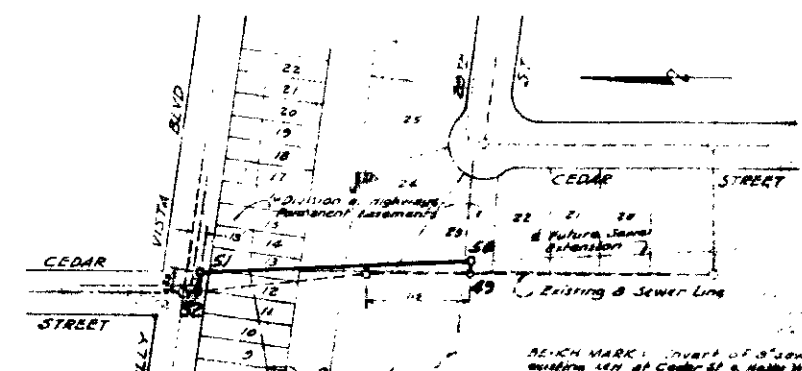


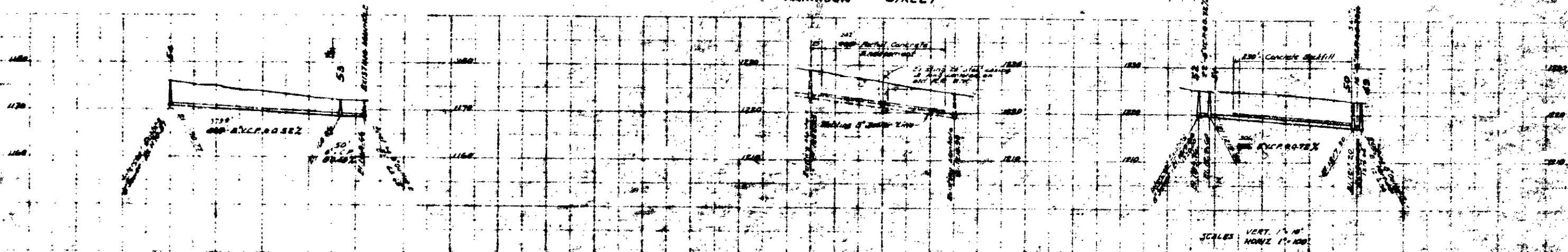
DETAIL
PARTIAL CONCRETE
ENCASEMENT



HARRISON STREET



REICH MARK (VERT. OF SEWER)
ELEV. 1256.00



• LEGEND •

- Plan of Sewer Main
- Plan of Sewer Manhole
- Plan of Sewer Shaft or Drop
- Plan of 4" Pipe Connection
- Plan of Existing Sewer
- Plan of Existing Water Line
- Plan of Existing Gas Line
- Plan of Existing Telephone Buried
- Plan of Existing Power or Telephone Pole
- Plan of Existing Guy Structure
- Plan of Existing Fire Hydrant
- Plan of Existing Trees
- Plan of Existing Fence
- Profile of Ground Elevation
- Profile of Sewer Manhole
- Profile of Sewer Main
- Elevation of Sewer Invert
- Plan of Existing Paving
- Plan of Existing Traffic Signal
- Plan of Existing Conduit to Traffic Signal

• ABBREVIATIONS •

- RCP Reinforced Concrete Pipe
- VCP Vit. Clay Pipe
- CMP Cast Iron Pipe
- ACP Asphalt Cement Pipe
- TR Iron Pipe
- RP Rubber Pipe
- TP Telephone or Telegraph Pole
- PH Pole Hydrant

• GENERAL NOTES •

1. Where shown and leaving to be finished by the Contractor.

2. See Drawing No. 3-10 of Specifications for Detail of Standard Sewer Manhole.

3. See Drawing No. 3-11 of Specifications for Detail of Concrete Sewer Manhole.

4. Where partial encasement is shown an existing sewer shall be encased in concrete. Backfill shall be made with granular material, compacted in layers, thoroughly compacted beneath the sewer and to 25% of maximum density before backfill is placed over it.

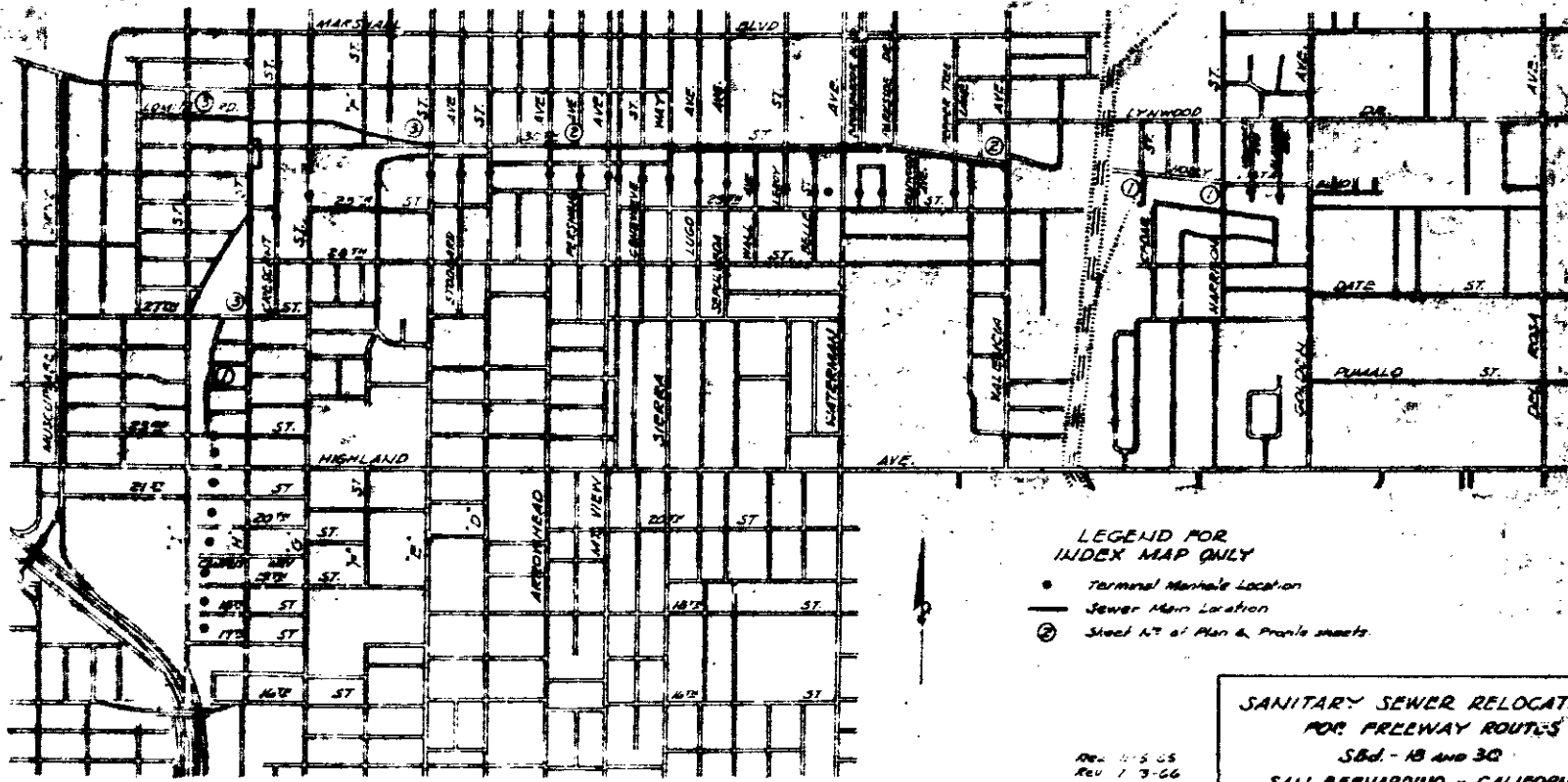
5. The location of any existing paving, curbs, sidewalks, underground structures, structures, etc., shown on the plans, are based on the latest available data. Contractor to verify the location of all such structures and structures affecting the work and the Contractor shall have the City and the Engineer's approval for any cuts or damages because of the existence or location.

6. Where connections are made to existing structures, the work shall be reconstructed as directed by the Engineer. Connections to existing structures or lines shall be shown on the plans, shall be made only upon completion and acceptance of the project or when directed by the Engineer. All connections shall be made in the open, unless otherwise noted on the drawings.

• SPECIAL NOTES •

1. Where shown on plans to intersect existing sewers, the Contractor shall construct a manhole over the existing sewer line and upon completion and acceptance of the project shall be directed by the Engineer, to that effect, to cut out the existing line within the manhole, reconstruct the flow channel, and plug the existing outfall with brick and mortar.

2. At several locations on these plans, the sewer is to end in new parts of city. These parts of city are shown on the plans and shall be constructed by the Contractor. The Contractor shall be responsible for the construction of such sewer lines, which may exist at the time of building, and shall be shown on the plans. The Contractor shall be responsible for the construction of such sewer lines, which may exist at the time of building, and shall be shown on the plans. The Contractor shall be responsible for the construction of such sewer lines, which may exist at the time of building, and shall be shown on the plans.



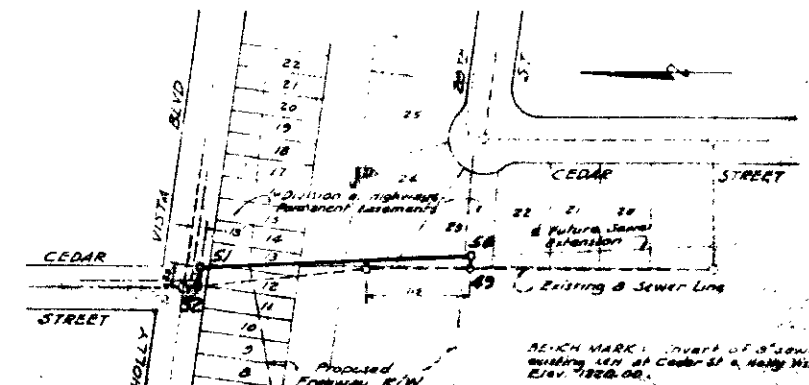
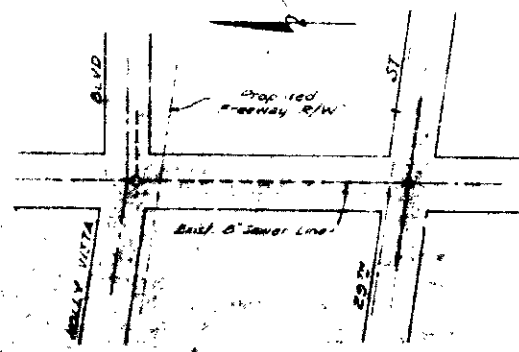
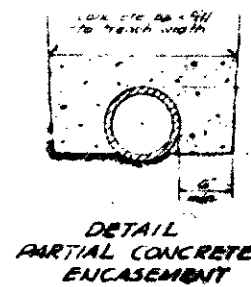
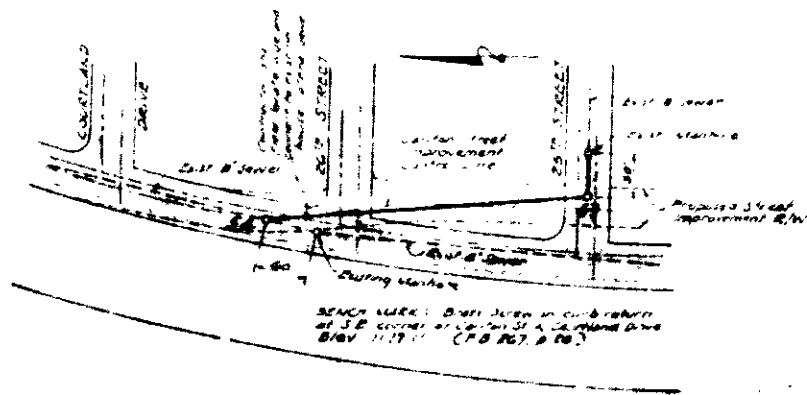
LEGEND FOR
INDEX MAP ONLY

- Terminal Manhole Location
- Sewer Main Location
- ⊙ Steel Mt. of Plan & Profile sheets

INDEX MAP
Scale: 1" = 1000'

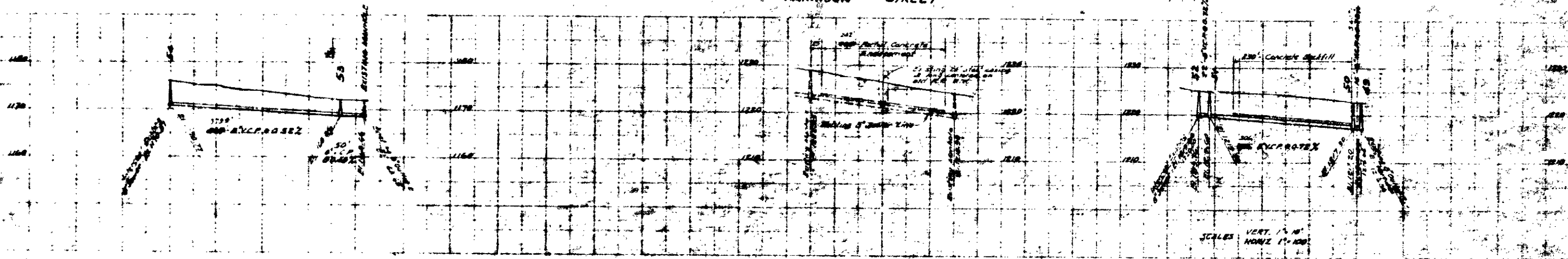
Revised as Built 9-10-66
1-26-67

SANITARY SEWER RELOCATION
FOR FREEWAY ROUTES
Sbd. - 18 and 30
SAN BERNARDINO - CALIFORNIA
CURRIE ENGINEERING COMPANY
DATE 10-2-65 PLANS & PROFILES INDEX MAP - ETC. SHEET 1 of 3
PLAN No 3334



CARLTON STREET

HARRISON STREET



• LEGEND •

- Plan of Sewer Main
- Plan of Sewer Manhole
- Plan of Sewer Shaft or Drop
- Plan of 6" Pipe Connection
- Plan of Existing Sewer
- Plan of Existing Water Line
- Plan of Existing Gas Line
- Plan of Existing Telephone Buried
- Plan of Existing Power or Telephone Pole
- Plan of Existing Guy Structure
- Plan of Existing Fire Hydrant
- Plan of Existing Trees
- Plan of Existing Fence
- Profile of Ground Elevation
- Profile of Sewer Manhole
- Profile of Sewer Main
- Elevation of Sewer Invert
- Plan of Existing Paving
- Plan of Existing Traffic Signal
- Plan of Existing Conduit to Traffic Signal

• ABBREVIATIONS •

- RCP Reinforced Concrete Pipe
- VCP Vit. Clay Pipe
- CMP Cast Iron Pipe
- ACP Asphalt Cement Pipe
- TR Iron Pipe
- RP Rubber Pipe
- TP Telephone or Telegraph Pole
- PH Pole Hydrant

• GENERAL NOTES •

1. Where shown and leaving to be finished by the Contractor.

2. See Drawing No. 3334 of Specifications for Detail of Standard Sewer Manhole.

3. See Drawing No. 3335 of Specifications for Detail of Concrete Sewer Manhole and Standard Concrete Encasement.

4. Where a partial encasement is shown, an existing sewer shall be encased in concrete. The concrete shall be placed in place and compacted thoroughly before the trench is backfilled with granular material.

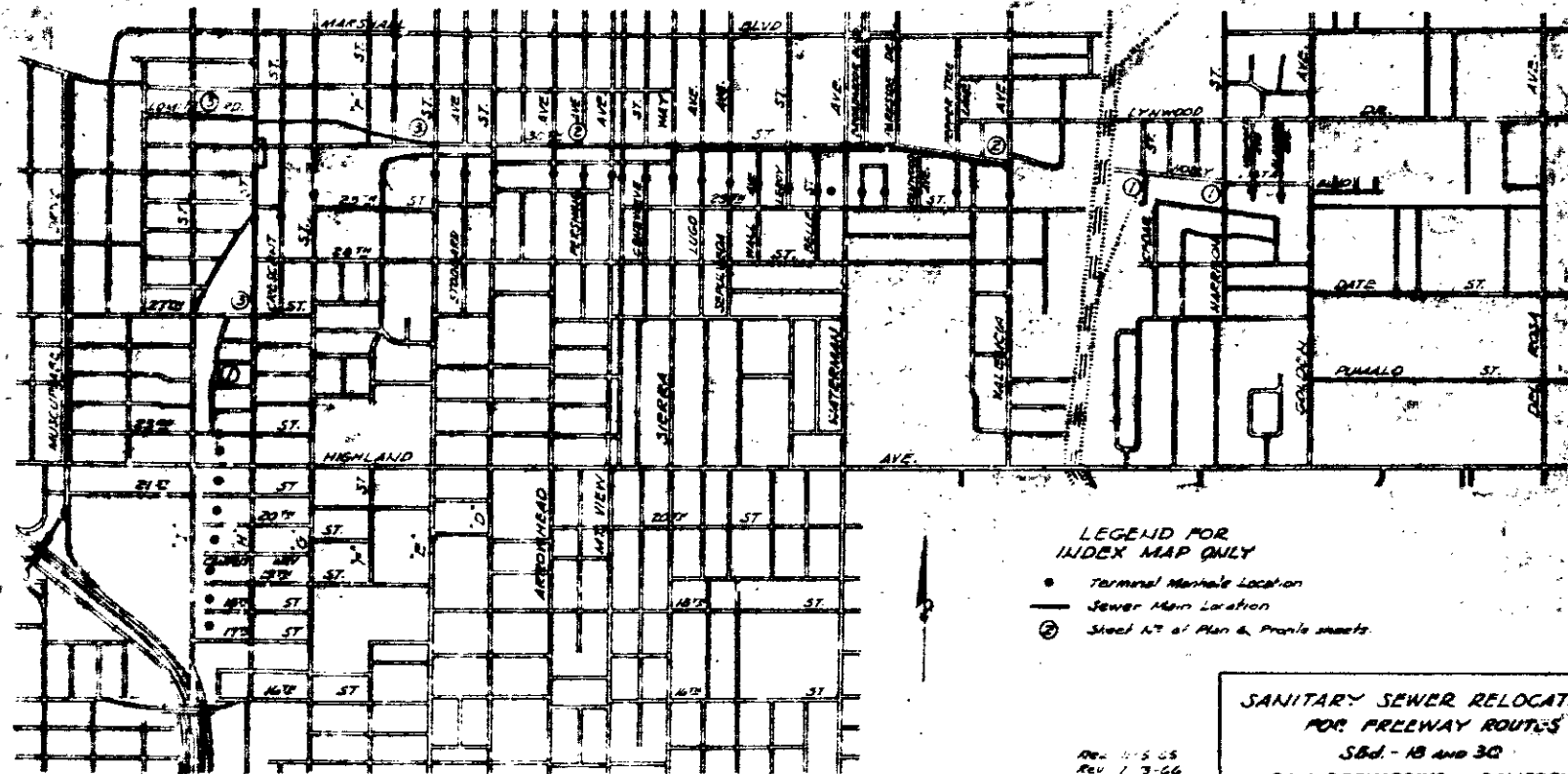
5. The location of any existing paving shall be shown on the plans and based on the latest available data. Where it is shown on the plans and is to be removed, the Contractor shall be responsible for the location, depth and amount of such utility structures and obstructions affecting the work and the Contractor shall leave the City and the Engineer harmless for any costs or damages because of the existence or location.

6. Where connections are made to existing manholes, the work shall be reconstructed as directed by the Engineer. Connections to existing manholes or lines shall be shown on the plans, shall be made only upon completion and acceptance of the project or when directed by the Engineer. All connections shall be made in the open, unless otherwise noted on the drawings.

• SPECIAL NOTES •

1. Where shown on plans to intersect existing sewers, the Contractor shall construct a manhole over the existing sewer line and upon completion and acceptance of the project shall be directed by the Engineer, to that effect, to cut out the existing line within the manhole, reconstruct the flow channel, and plug the existing outlet pipe with brick and mortar.

2. At several locations on these plans, the sewer is to end in new pits of varying sizes and depths. The location of existing manholes and sewer lines shall be shown on the plans and shall be shown in their original location and depth. The location of any existing manholes and sewer lines shall be shown on the plans and shall be shown in their original location and depth. The location of any existing manholes and sewer lines shall be shown on the plans and shall be shown in their original location and depth.



LEGEND FOR INDEX MAP ONLY

- Terminal Manhole Location
- Sewer Main Location
- ⊙ Steel Mt of Plan & Profile sheets

INDEX MAP
Scale: 1" = 1000'

REVISED AS BUILT 9-10-66
1-26-67

SANITARY SEWER RELOCATION
FOR FREEWAY ROUTES
Sbd. - 18 and 30
SAN BERNARDINO - CALIFORNIA
CURRIE ENGINEERING COMPANY

DATE 10-2-65	PLANS & PROFILES INDEX MAP - ETC.	SHEET 1 of 3
PLAN No 3334		